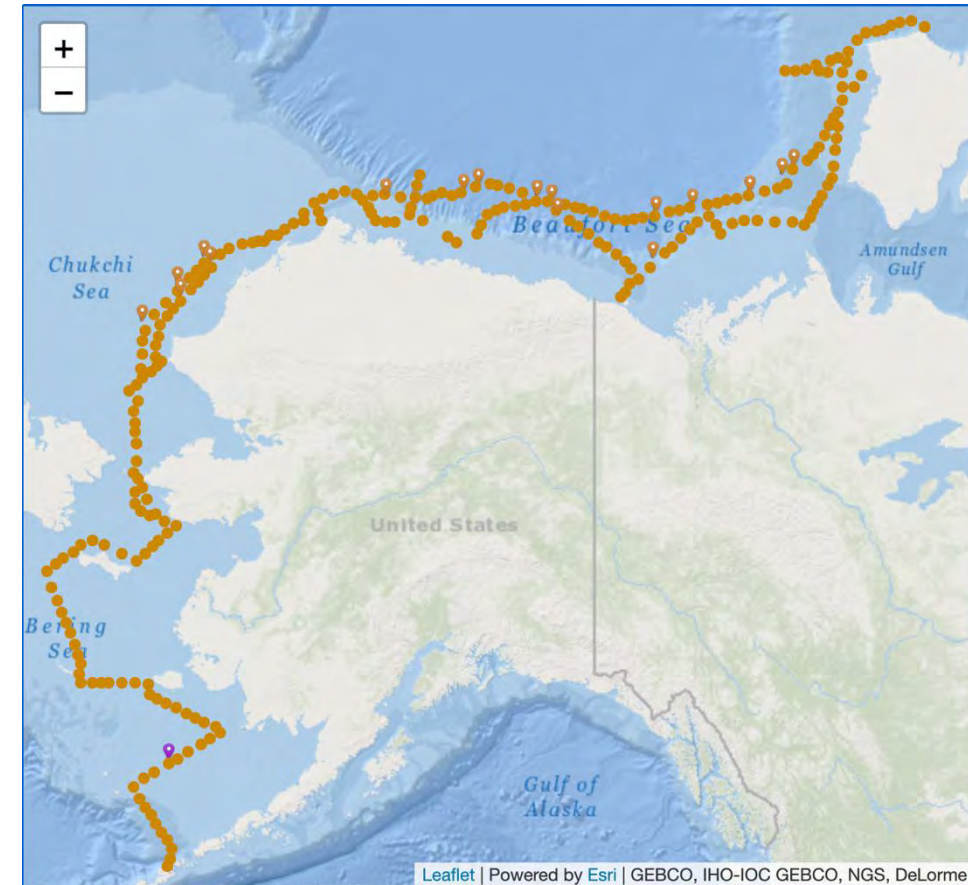
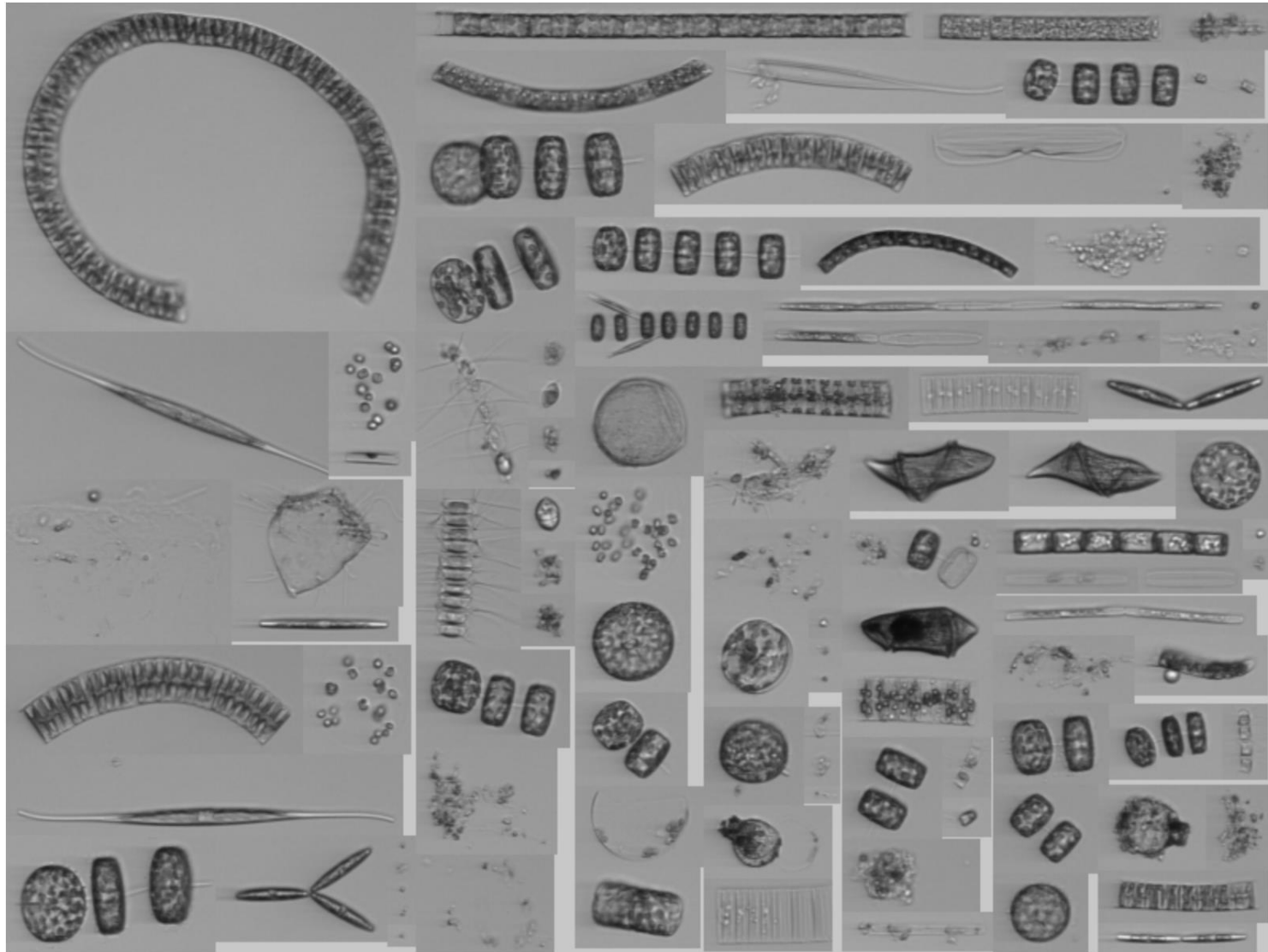
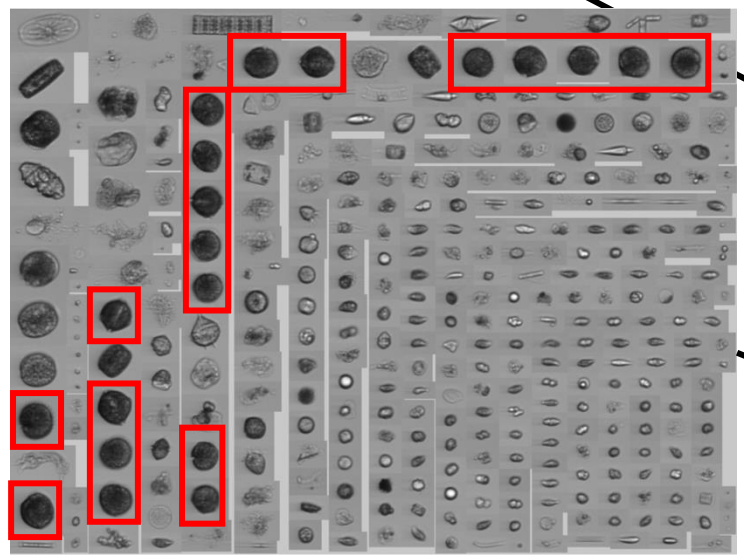
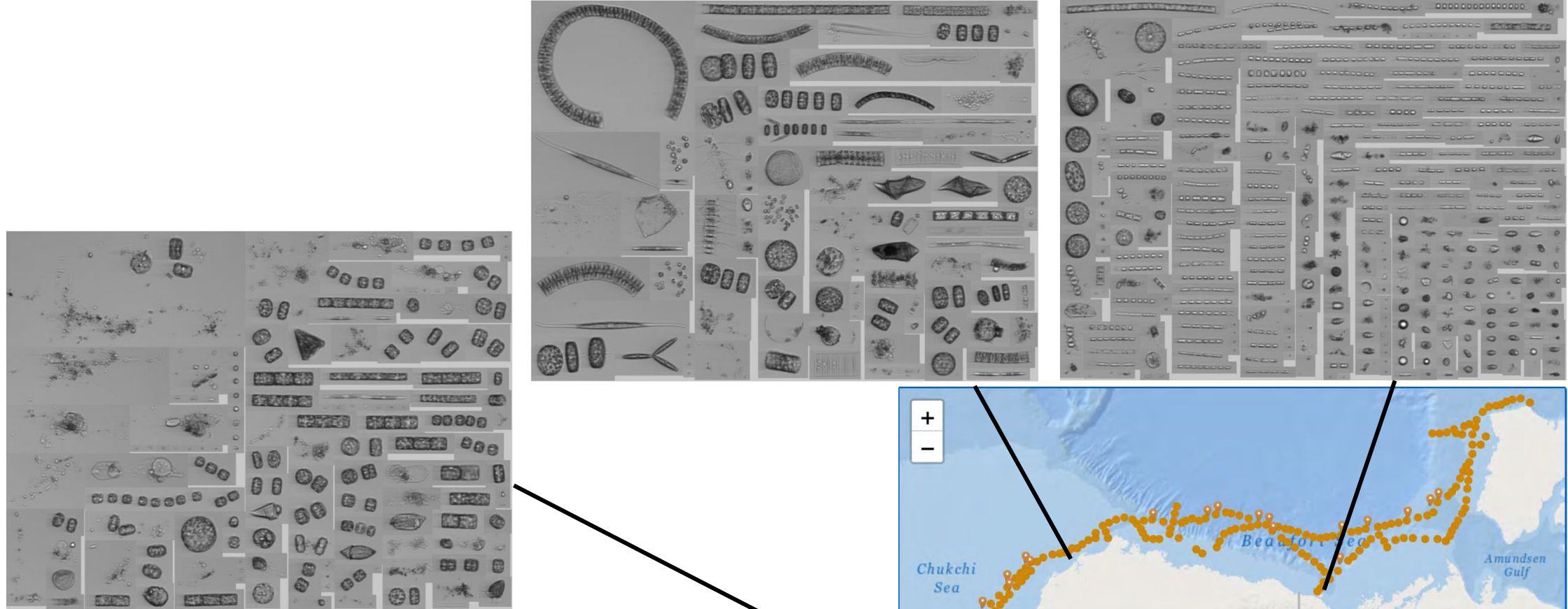


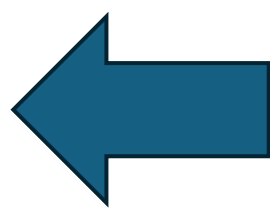
- Continuous phytoplankton sampling
  - Just needs power and seawater access
  - Sample ~5ml every 20 minutes
- With internet: near real-time data upload to WHOI's IFCB dashboard
  - Daily examination of images to detect HAB species
  - Weekly updates to researchers and communities







Advisory  
drafted and  
sent to  
communities  
in the region





128 m (420 ft)



80 m (261 ft)



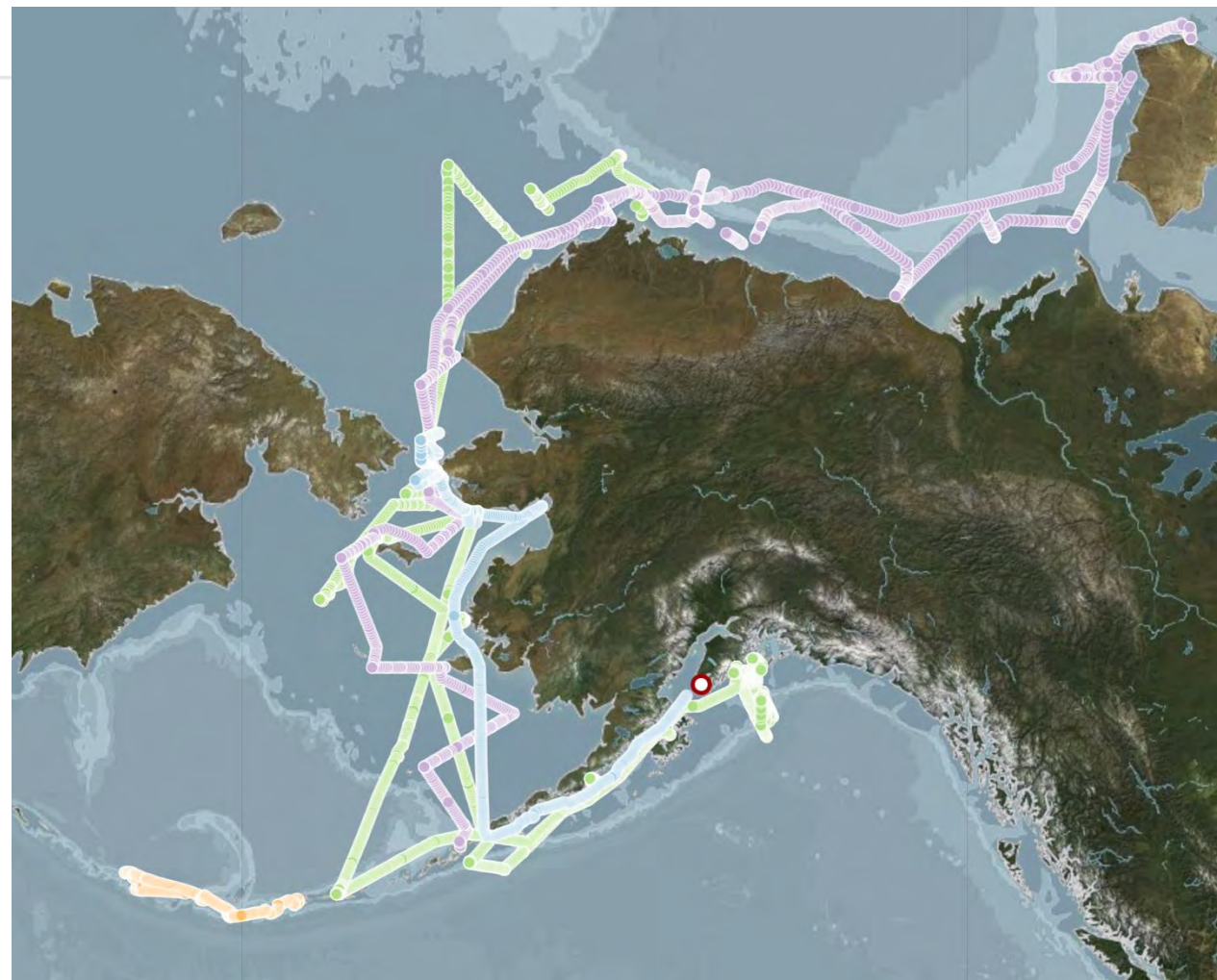
37 m (120 ft)



35 m (115 ft)

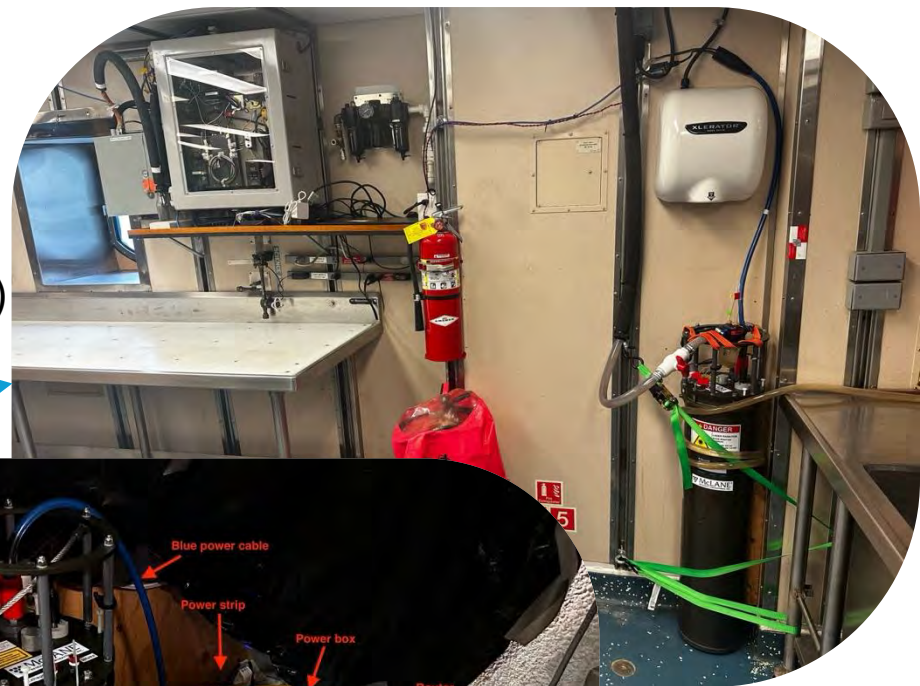


12 m (40 ft)

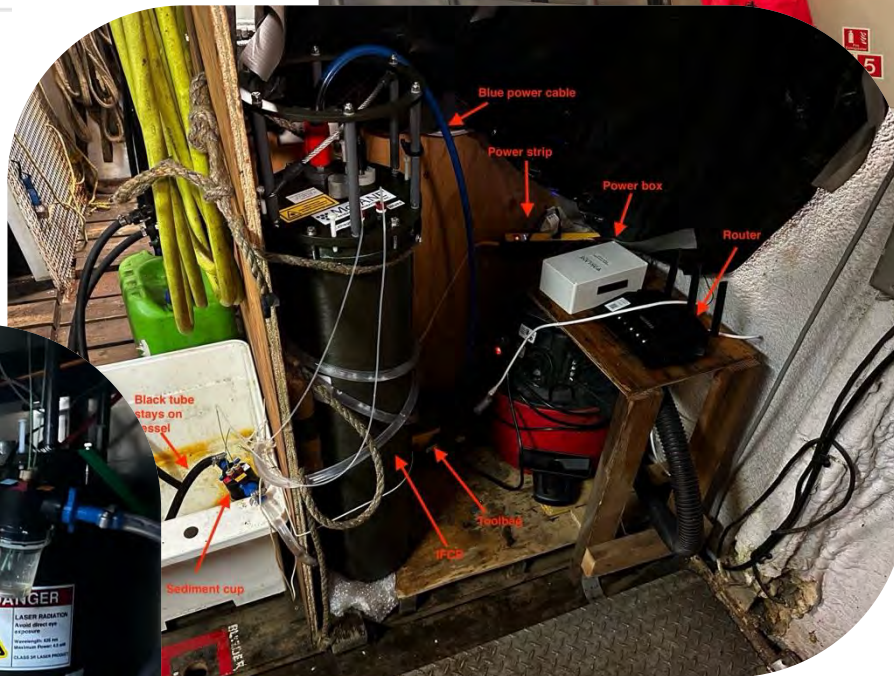




128 m (420 ft)



80 m (261 ft)



37 m (120 ft)

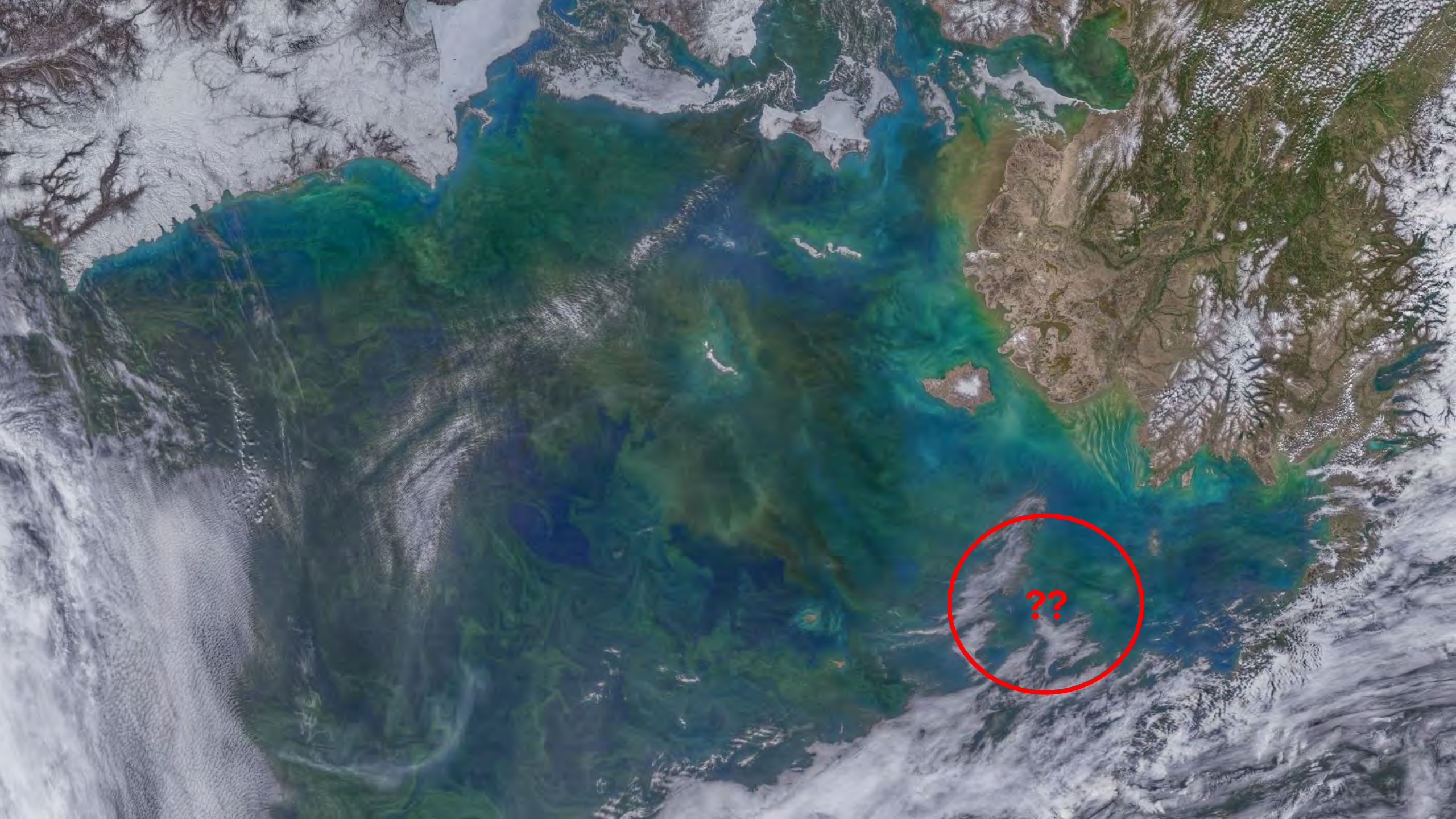


35 m (115 ft)



12 m (40 ft)





??

- 3 IFCBs will be available
- Possibilities being lined up now for deployments
  - Norseman II (June, August, September?)
  - NOAA RACE bottom trawl survey
  - Sikuliaq (starting in September?)
  - Spring and Fall UAF cruises
  - Onshore deployments (Kotzebue, Kasitsna Bay, Cordova, anywhere else?)