



IARPC

**Field Operations  
Community of Practice**  
*Alaska Marine Research Planning  
Night*

Renee Crain, David Allen, Katy Smith, Mary Beth "MB"  
Armstrong



# FOCP Co-Leads



David Allen  
NOAA ARP



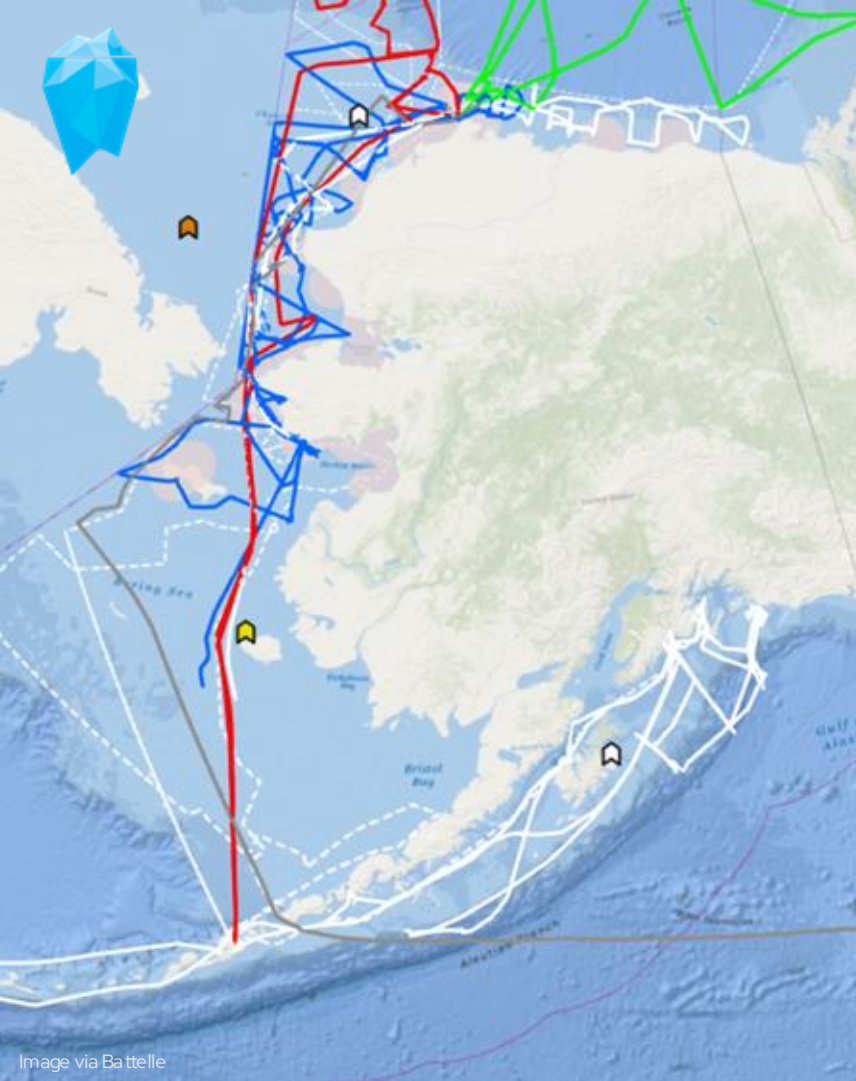
Renee Craine  
US NSF



Katy Smith  
US NSF



Mary Beth "MB"  
Armstrong  
Knauss Fellow



# Field Operations

Coordinate among federal agencies supporting fieldwork and share information among researchers and communities.

**Research Vessel Matrix**

**Mooring Matrix**

**Pre/Post-field Season Meetings**

**Public Meetings**

**Fed-Only Meetings**

**Targeted Community Meetings**

## Planned Research Vessel Movements: 2025 Research Season

Each spring, summer, and fall, numerous research vessels travel through Alaska and Arctic waters. IARPC and federal agencies compile planned research expedition dates, planned routes, research goals, and locations of data-collection moorings.

Our hope is that researchers can use the information about research expeditions to coordinate activities, and that communities can use it to understand what vessels are in their waters and how to contact them if necessary. Additionally, with the list of mooring locations we aim to inform the scientific community and vessel operators of the locations of all moorings presently deployed in the Bering, Chukchi, and Beaufort seas. This will reduce the risk of damage to the moorings and facilitate collaborative science activities.

On this page you will find a spreadsheet with all planned expeditions, brief descriptions of expeditions, and a spreadsheet of mooring locations. The spreadsheets will be periodically updated and emailed out to partners. If you would like to receive updates, [sign up for the email distribution list](#).

Please contact [field\\_operations@iarpcollaborations.org](mailto:field_operations@iarpcollaborations.org) with any questions, or to provide additional information about upcoming expeditions.

### Download the spreadsheet of research expeditions

[Excel](#) | [PDF](#)

Updated July 16, 2025

### Download the spreadsheet of mooring locations

[Excel](#) | [PDF](#)

Updated April 28, 2025

# Research Vessel Matrix

Webpage with compiled  
information about  
expeditions to inform  
communities & researchers.



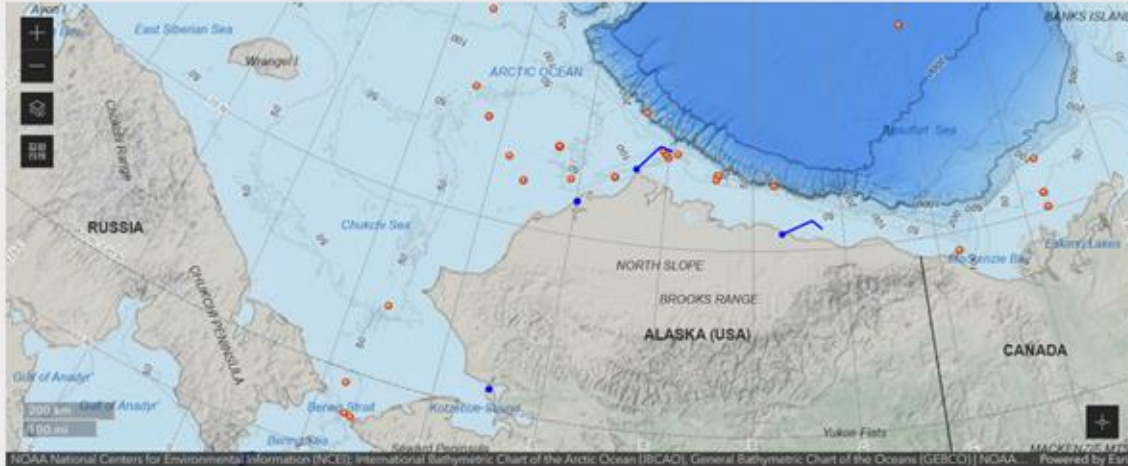
[iarpcollaborations.org/  
research-expeditions.html](https://iarpcollaborations.org/research-expeditions.html)



# Mooring Matrix

## CURRENT CONDITIONS

Click the blue wind bars for detailed weather information. Orange dots show research vessel mooring locations.



Webpage with compiled information about mooring to inform the maritime community, local, coastal, and Indigenous communities, researchers.



[iarpc collaborations.org/](https://iarpc collaborations.org/)

Research-expeditions.html and Arctic Watch under current conditions <https://arcticwatch.org/maritime-operations/#weather>

: DAILY REPORT – RESEARCH VESSEL XXXXXX FOR DATE (DDMMYY)

1: RESEARCH VESSEL XXXXXX

**PERIOD COVERED:** MMDD-MMDD, HOURS (e.g., 0713 – 0714, 20:00-20:00)  
PERIOD SHOULD COVER THE LAST 24 HOURS AND SHOULD BE REPORTED IN  
AKST/AKDT.

**STARTING POSITION:** LAT/LONG & REF TO GEO POSITION (ESTIMATED)

**ENDING POSITION:** LAT/LONG & REF TO GEO POSITION (ESTIMATED)

**NARRATIVE OF OPERATION ACTIVITIES OF THE PAST 24 HOURS (SUMMARY OF  
ACTIVITIES)**

**NOTABLE WILDLIFE OBSERVATIONS (MARINE MAMMALS, SEA BIRDS, ETC.)**

**CURRENT WEATHER DESCRIPTION**

- o WIND: XXXT/XXXKTS
- o SEAS: XXXT/XFT. SWELL XXXT/XFT
- o SEA SURFACE SALINITY

**NARRATIVE OF UPCOMING OPERATIONS FOR THE NEXT 24 HOURS (E.g.,  
MOORING/GLIDER DEPLOYMENTS, SMALL BOAT OPS, TRANSIT DETAILS, ETC.)**

**DATE DEPARTED HOMEPORT:** DDMMYY

**SCHEDULED RETURN TO HOMEPORT:** DDMMYY

**NEXT PORT OF CALL:** DDMMYY-DDMMYY

**LOCATION:** CITY, STATE/COUNTRY

**POINTS OF CONTACT**

- o **BRIDGE CONTACT**
  - i. **PHONE:**
  - ii. **EMAIL:**
- o **LEAD SCIENTIST CONTACT**
  - i. **PHONE**
  - ii. **EMAIL**

# FOCP / Arctic Watch: Daily Cruise Report Template

- Consistent, standardized information
- Expanded distribution network
- Sharing and archiving of data
- Created and socialized with researchers, communities, federal agencies
- Reports will be distributed via the Arctic Watch enrollment system
- Reports will be archived



# Newsletter sign-up

Updates to the research vessel matrix, mooring matrix, pre- and post-field season meetings



[field.operations@iarpcco](mailto:field.operations@iarpcco)  
[llaborations.org](http://laborations.org)