

Pacific Walrus Research Expeditions 2023 - 2026

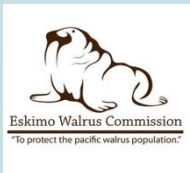
- **Research Area Location:** Northern Bering Sea, Chukchi Sea
- **Vessel:** R/V Norseman II
- **Project description:** A series of 3 expeditions to examine Pacific walrus population dynamics. Parameters to be estimated are: abundance, survival, reproductive rate, population trend.
- **Funding:** U.S. Fish and Wildlife Service, U.S. Geological Survey



Contact:
Irina Trukhanova (irina_trukhanova@fws.gov)

Coordination with Communities

- Coordination with Eskimo Walrus Commission.
- 3 Alaska Native hunters participated in 2023 and 2025, 1 in 2024.
 - Anticipate 2–3 Alaska Native participants in 2026.
- We notify coastal communities prior to the field season via email and phone calls.
- We notify coastal communities when operations are <50 nautical miles of village and provide radio channel for communication.

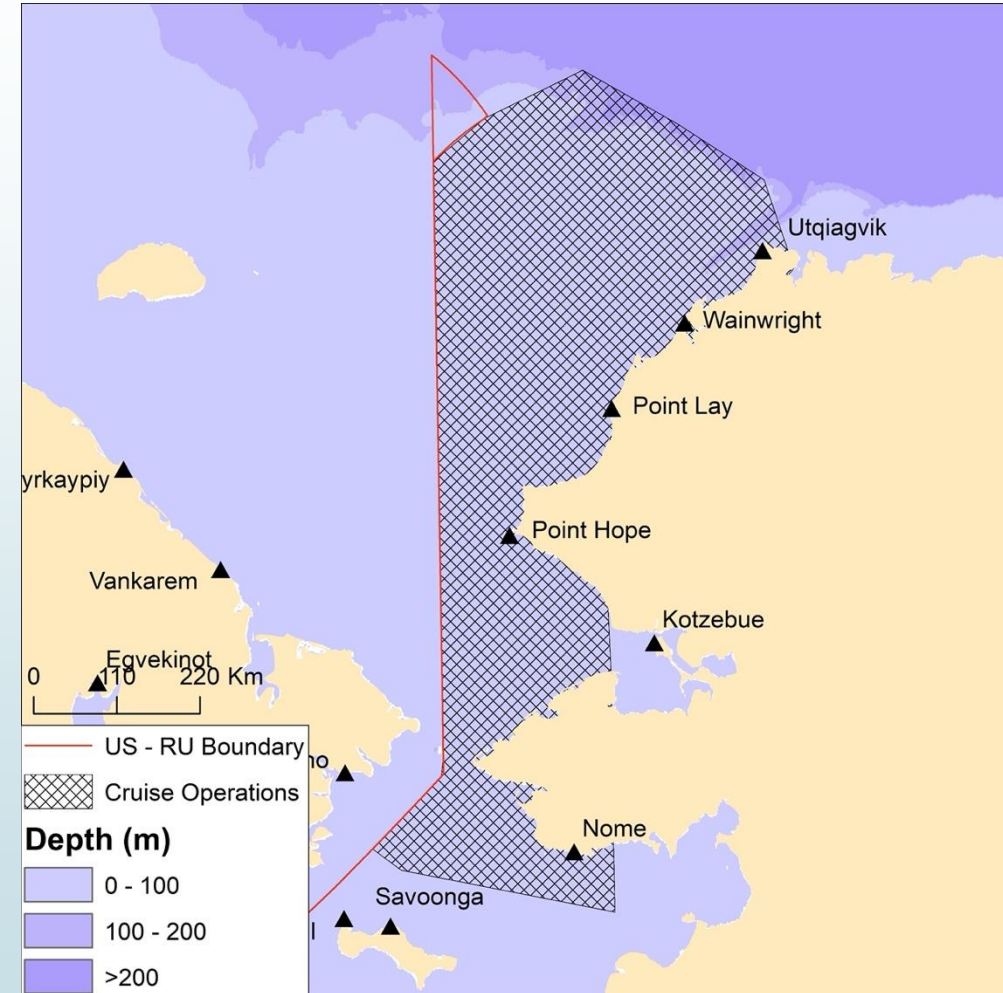


Contact:
Irina Trukhanova (irina_trukhanova@fws.gov)

Pacific Walrus Research Expedition 2026

FEDERAL FUNDING IS PENDING

- ▶ June 4 – July 2, 2026
R/V Norseman II + 3 skiffs + aircraft.
- ▶ Collecting a range of samples:
 - Biopsy samples from walrus hauled out on sea ice;
 - Age structure data;
 - Walrus fecal samples for diet;
 - Water, fecal samples, and benthic inverts for harmful algal bloom analysis (NOAA).
- ▶ We are looking for partners and collaborators to offset additional vessel-days costs.



Contact:
Irina Trukhanova (irina_trukhanova@fws.gov)

